

15kV	200A Loadbreak 4-Way Junction	w/ s.s. Bracket	164J4
------	-------------------------------	-----------------	-------



**Note: Red PBT Interface Shield available soon**

## Features:

- ☒ 15kV, 200 Amp Loadbreak 4-Way Junction
- ☒ Fully shielded, fully submersible molded rubber housing
- ☒ 100% peroxide-cured construction includes insulation and conductive EPDM materials
- ☒ Provides mating for Elastimold® Elbow connectors
- ☒ Mounting hardware for flat or curved mounting positions
- ☒ Stainless Steel Mounting brackets and hardware

## 164J4

### Loadbreak 4-Way Junction

#### Applications:

ELASTIMOLD® junctions are designed for subsurface, vault or padmount applications and can be used for sectionalizing, looping, tapping, and equipment bypass. Junctions are designed to mate with other ELASTIMOLD® products including:

- ☐
  - ☒ 15kV Family of Elbow Connectors
  - ☒ 160GLR Grounding Elbow
  - ☒ 370TR Test Rod
  - ☒ 160DR/DRG Insulated Cap
  - ☒ 167/168DRG Insulated Cap

- ☐
- ☐
- ☐

ELASTIMOLD® loadbreak junctions, provide a fully shielded, fully submersible, separable, insulated assembly designed for energized operation. They are suitable for use on 15-kV class distribution systems, and rated for 200-ampere loadmake/loadbreak operation. Junctions are equipped with universal brackets that accommodate curved or flat surfaces and provide tilt mounting angles from 0° to 90° in 15° increments.

#### Ratings:

Meets ANSI/IEEE Standard 386, Latest Revision

**For 15kV Voltage Class:** 8.3kV Phase-to-Ground

– Operating Voltage

14.4kV Max Phase-to-Phase

95kV BIL – Impulse Withstand (1.2 x 50 microsecond wave)

34kV AC – One minute withstand

53kV DC – 15 minutes withstand

11kV AC – Corona Extinction @ 3pC sensitivity

200 Amp – Continuous and Loadbreak

10kA Sym – 10 Cycles Momentary & Fault Close

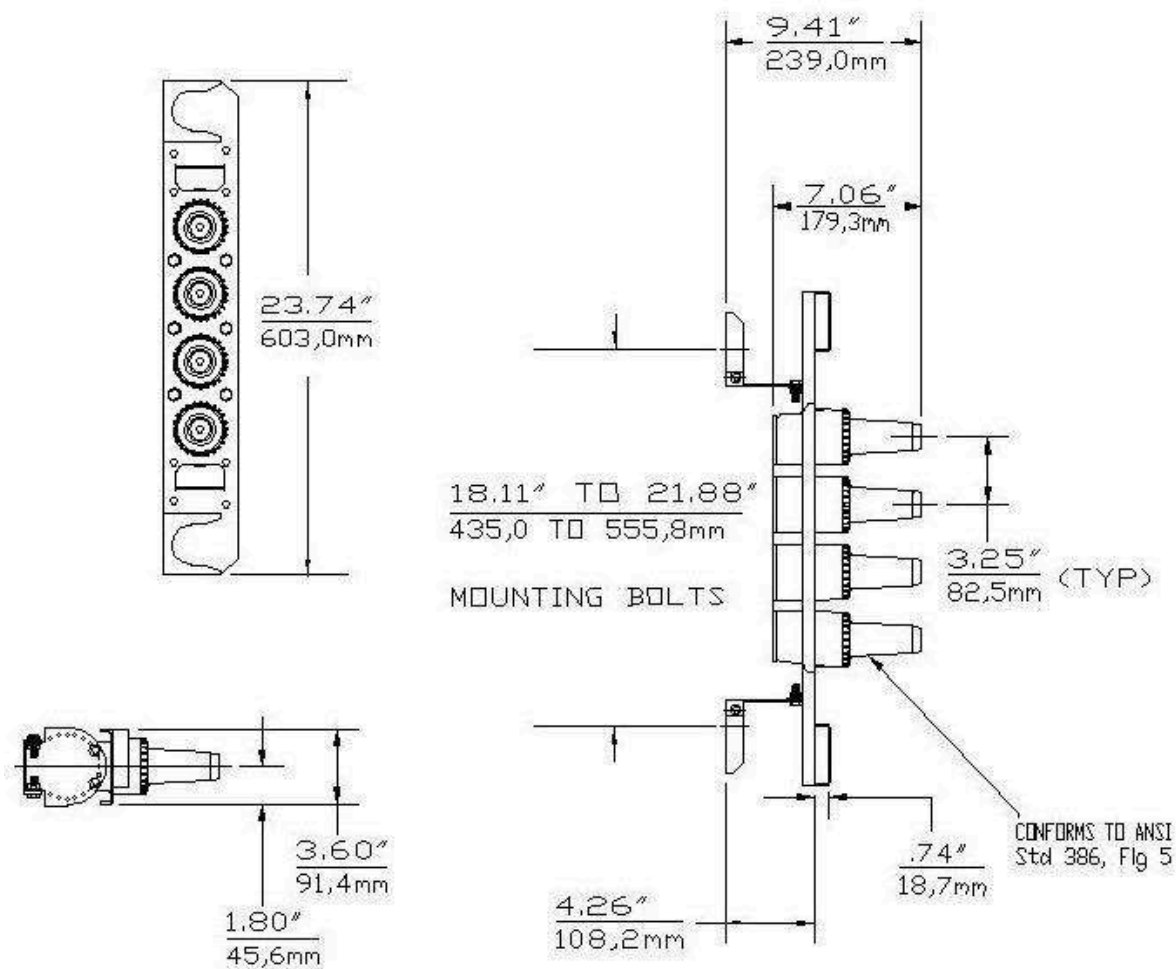
**CORREO ELECTRÓNICO:**

moises.salazar@relsamex.com  
rafael.salazar@relsamex.com



**WWW.RELSAMEX.COM**  
**ENVÍOS A TODO MÉXICO**

15kV	200A Loadbreak 4-Way Junction	w/ s.s. Bracket	164J4
------	-------------------------------	-----------------	-------



**Each kit contains the following:**

- |   |                          |            |
|---|--------------------------|------------|
| 1 | Basic molded junction    | 164J4      |
| 4 | Protective shipping cap  | 1601-APC-1 |
| 2 | Tube, lubricant          | 82-08      |
| 1 | Installation instruction | IS-0415    |

### Ordering Instructions:

Specify **164J4** for 15kV, 200 Amp 4-way Loadbreak Junction.

**CORREO ELECTRÓNICO:**

moises.salazar@relsamex.com  
rafael.salazar@relsamex.com



**WWW.RELSAMEX.COM**  
**ENVÍOS A TODO MÉXICO**